



PRESSCONTROL R



ELECTRONIC DEVICE FOR CONTROL AND PROTECTION OF THE PUMP WITH ADJUSTABLE RESTART PRESSURE

- Starts and stops the pump depending on opening and closing of the taps.
- Stops the pump in case of a water shortage and protects it from dry running.
- Allows you to adjust the restart pressure from 1,5 to 3 bar.
- Can be installed on surface and submersible pumps.
- No need for an expansion tank, check valve, filter or fittings.
- Maintenance free.

TECHNICAL FEATURES

Single-phase mains voltage	230 Vac
Acceptable voltage fluctuation	+/- 10%
Frequency	50-60 Hz
Current max.	10 A
Power max.	1,5 kW [2 HP]
Protection degree	IP 65
Operating pressure max.	12 bar
Operating temperature max.	65°C
Minimum flow	~1 l/min
Male connections	Gc 1"
Certifications	TÜV SÜD

PRESSCONTROL R differs technically and visually from Presscontrol only in the modified hydraulic part to allow the restart value adjustment. It is therefore possible to combine the restart regulation function also to the Presscontrol UP, equipped with automatic restart and anti-jamming function.

CONTROL PANEL

SIGNALING OF THE WORKING PHASES AND ANOMALIES

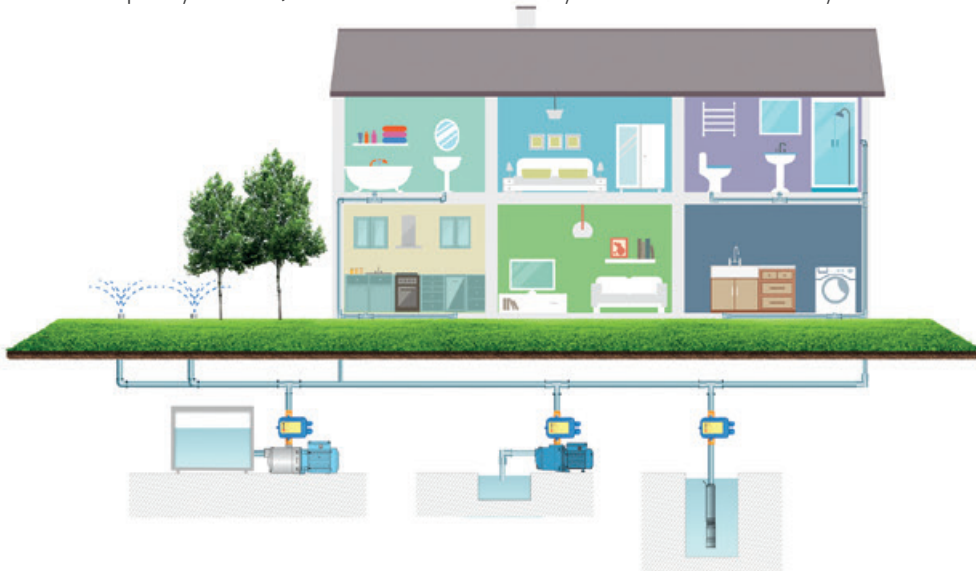
	POWER ON	Green led on	Device energized
	PUMP ON	Yellow led on	Pump running
	FAILURE	Red led on	Water shortage
	RESTART	Button	Reset after failure



Made in Italy

INSTALLATION AND STARTUP

The device can be installed directly on the pump or between the pump and the first tap. Make all the electrical connections, check that the pump is correctly primed, open a tap and energize. The green Power on Led will light up on the control panel and the pump will start [yellow "Pump on" Led on] and will keep running for several seconds to pressurize the system. If this time is insufficient, the device will stop the pump [red "Failure" led on]. Press and hold down the Restart button until the red Failure led turns off and the water comes out of the open tap. When the tap is closed, the pump will stop after a few seconds [yellow "Pump on" led turns off]. From now on, the device will turn the pump on and off depending on the opening and closing of the tap. In case of water shortage, the device will stop the pump and protect it from dry running [red "Failure" led on]. In case of a temporary blackout, the device will automatically rearm once the electricity returns.



SETTING THE RESTART VALUE [See figure]

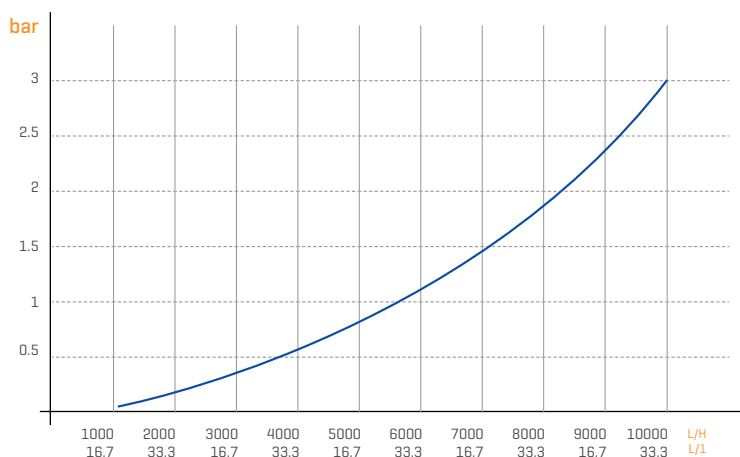
Set the desired restart value by turning the screw on the back of the unit. Turn clockwise to increase restart pressure value and counter clockwise to decrease restart pressure value.

For a correct regulation of the restart value, follow the table below.



PRESTART PRESSURE	1.5 bar	2 bar	2.5 bar	3 bar
FLOORS NUMBER	5	6	8	10
BUILDING HEIGHT (H)	15 mt	20 mt	25 mt	30 mt
MAX PUMP PRESSURE	min 3 bar	min 3,5 bar	min 4,0 bar	min 4,5 bar

PRESSURE LOSS DIAGRAM



OPTIONALS

On request, the device can be supplied with:

- Wired electrical cables.
- Version 115 Vac.
- Version equipped with automatic restart and anti-jamming function.